

Carrière de BRS
 Oneux -6
 Tir du 16/10/2023
 Sismographe placé au
 261 Halleux
 4710 Comblain-au-Pont

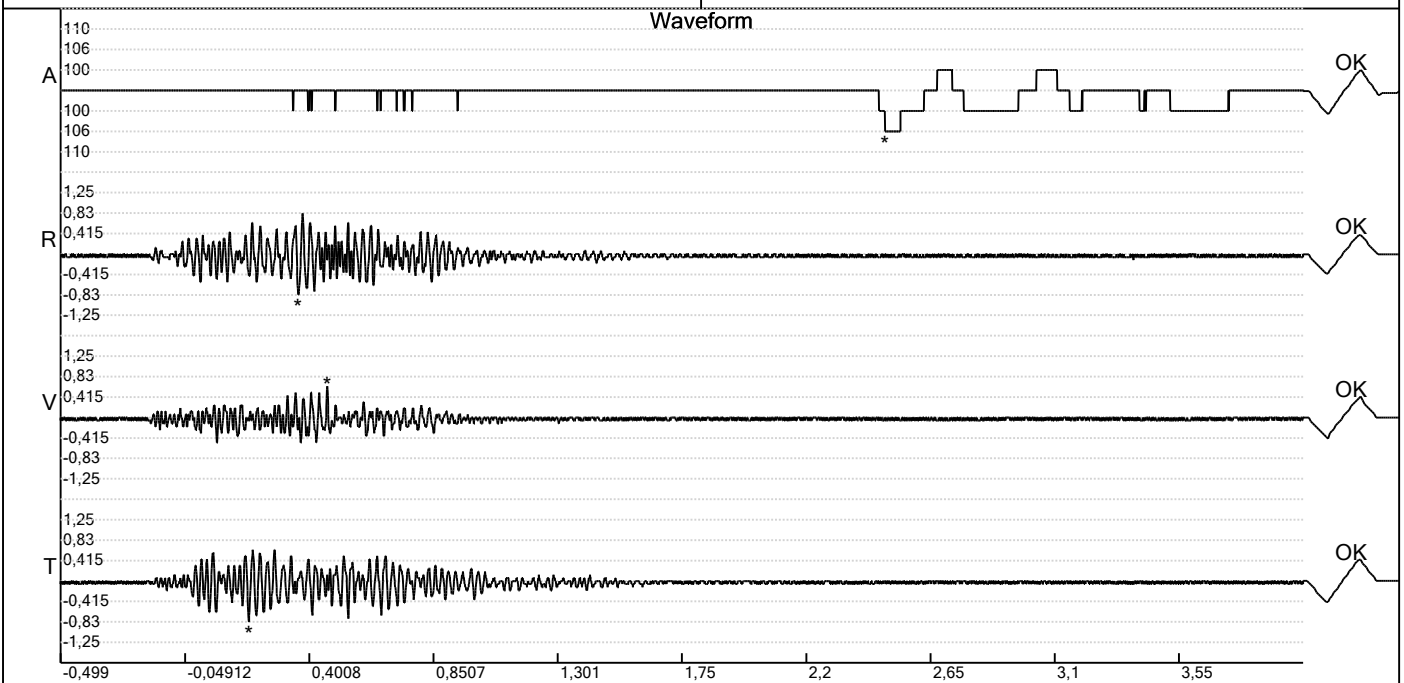
Record: 1789202310161401050.dtb
 Number: 050
 Seismograph: Mini-Seis 1789
 Type of Record: Waveform
 Date: 16-10-23 14:01:00
 Duration: 4,50 Seconds
 Sample Rate: 1024
 Pre-Trigger: 0,5 Seconds
 Seismic Trigger: 0,51 mm/s
 Acoustic Trigger: 142,1 dB
 Seismic Gain: 63,5
 Acoustic Gain: 141,9 dB
 Voltage: 6,3

Peaks and Frequencies

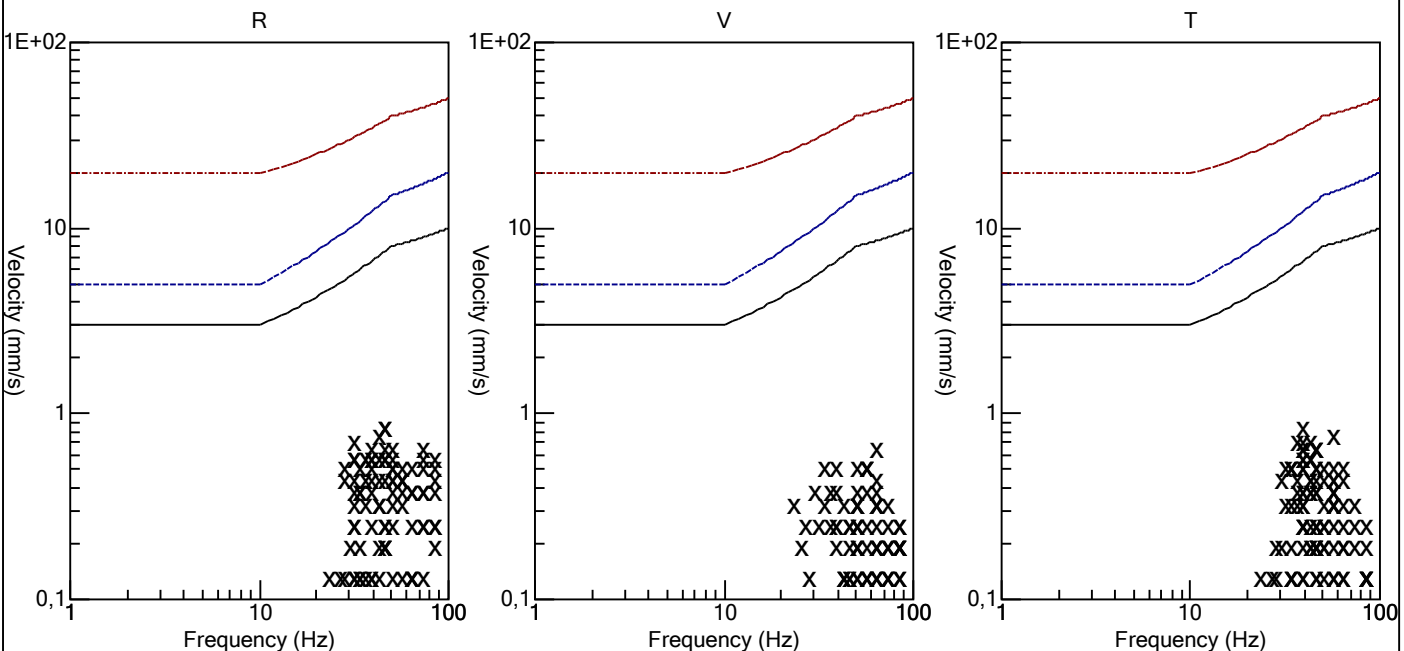
PPV Maximum (Geo #1): 0,83 mm/s
 Acoustic #1: 106,0 dB @ 3,5 Hz (2,486328 s)
 Radial #1: 0,83 mm/s @ 46,5 Hz (0,3613281 s)
 Vertical #1: 0,64 mm/s @ 64,0 Hz (0,4667969 s)
 Transverse #1: 0,83 mm/s @ 39,3 Hz (0,1826172 s)
 Last Calibration Date: 03-12-21

Graph Information

Time Range: -0,499 s to 4 s, Intervals: 0,4499 Seconds



Velocity vs. Frequency (DIN 4150-3 Tab 1)

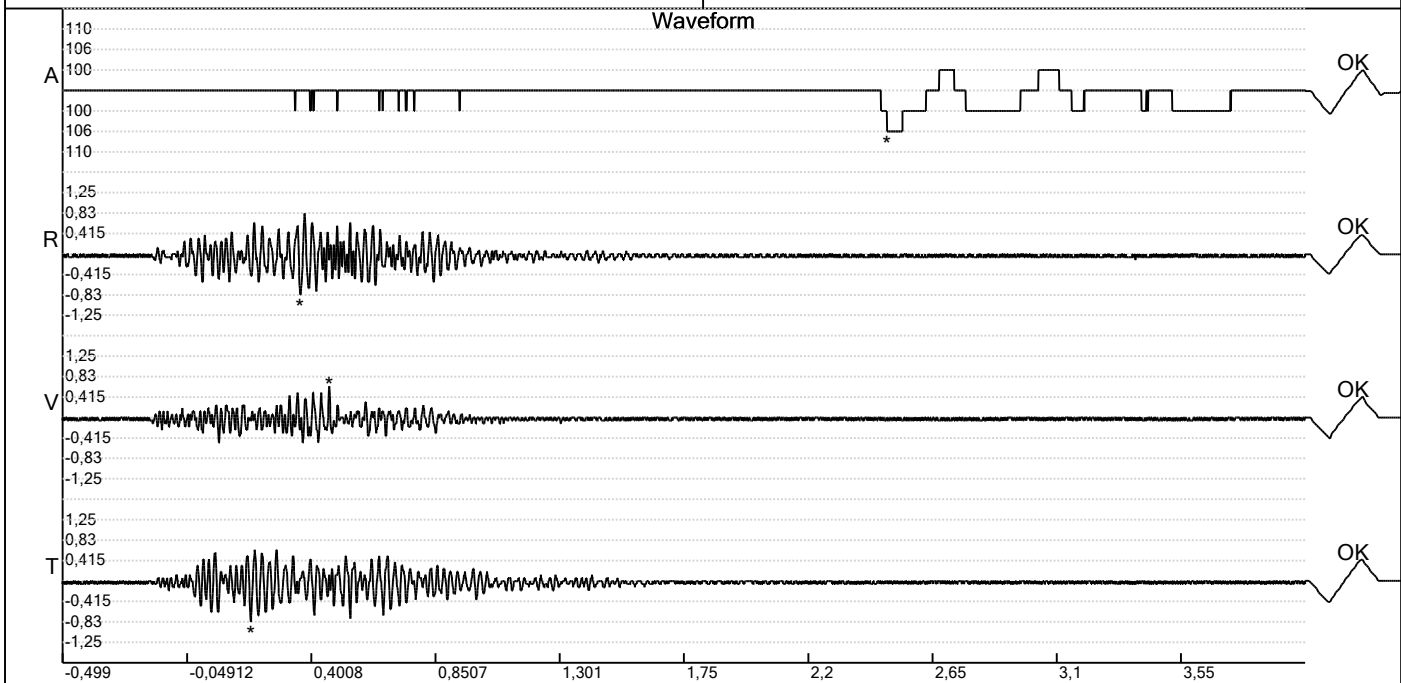


Carrière de BRS
 Oneux -6
 Tir du 16/10/2023
 Sismographe placé au
 261 Halleux
 4710 Comblain-au-Pont

Record: 1789202310161401050.dtb
 Number: 050
 Seismograph: Mini-Seis 1789
 Type of Record: Waveform
 Date: 16-10-23 14:01:00
 Duration: 4,50 Seconds
 Sample Rate: 1024
 Pre-Trigger: 0,5 Seconds
 Seismic Trigger: 0,51 mm/s
 Acoustic Trigger: 142,1 dB
 Seismic Gain: 63,5
 Acoustic Gain: 141,9 dB
 Voltage: 6,3

Peaks and Frequencies
 PPV Maximum (Geo #1): 0,83 mm/s
 Acoustic #1: 106,0 dB @ 3,5 Hz (2,486328 s)
 Radial #1: 0,83 mm/s @ 46,5 Hz (0,3613281 s)
 Vertical #1: 0,64 mm/s @ 64,0 Hz (0,4667969 s)
 Transverse #1: 0,83 mm/s @ 39,3 Hz (0,1826172 s)
 Last Calibration Date: 03-12-21

Graph Information
 Time Range: -0,499 s to 4 s, Intervals: 0,4499 Seconds



Fast Fourier Transform (Amplitude Spectrum)

